

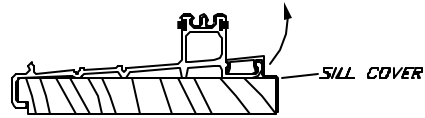
DOOR INSTALLATION INSTRUCTION

PRE INSTALL FIXED PANEL INTO FRAME BEFORE INSTALLING DOOR.

TO ANCHOR - #10 x 2 1/2" OR 3" TRUSS HEAD SCREWS ARE RECOMMENDED.

ALLOW MINIMUM OF 1"(25MM) SCREW BITE INTO SUBFRAME.

A- LIFT INTERIOR SILL COVER BY PULLING IT UP TO EXPOSE ANCHOR HOLES.



B- POSITION DOOR WITHIN ROUGH OPENING.

C- MARK LINE INDICATING EXTERIOR OF SILL.

D- APPLY BEAD OF CAULK JUST INSIDE OF THE MARKED LINE.

E- SHIFT FRAME BACK INTO PLACE OVER CAULKING. PROVIDE TEMPORARY RESTRAINT.

F- LEVEL SILL, SHIM AS REQUIRED AND ANCHOR.

G- PLUMB JAMBS, SHIM AND ANCHOR.

H- LEVEL HEADER, SHIM AND ANCHOR.

NOTE: MEASURE PRAME DIAGONALLY TO CHECK FOR SQUARENESS.

I- INSERT OPERATING SASH, HEADER FIRST THEN ADD INTERLOCK COVER (HAMMER INTO PLACE THROUGH A WOOD BLOCK.)

J- CHECK FOR PARALLEL LINES BETWEEN SASH AND FRAME. ADJUST SHIMS AND ANCHOR IF REQUIRED.

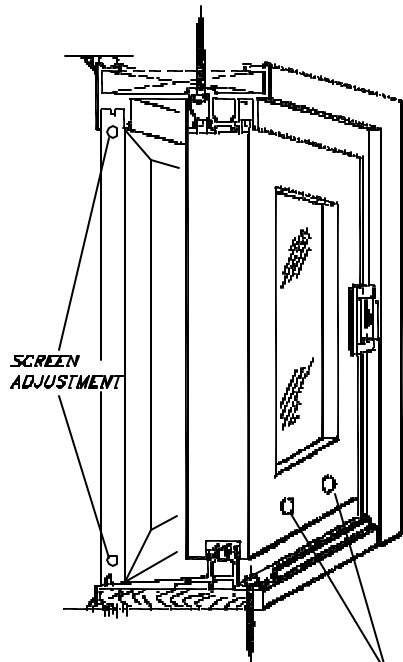
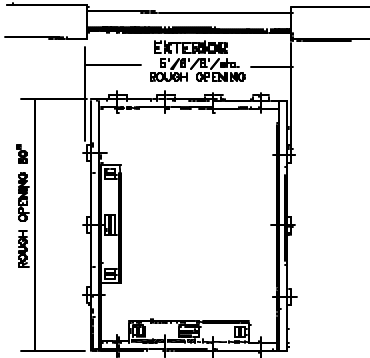
K- ADJUST SASH AND SCREEN HEIGHT TO ALIGN WITH LOCKS IF REQUIRED.

L- PRESS INTERIOR SILL COVER INTO POSITION.


M- FILL CAVITY BETWEEN FRAME AND ROUGH OPENING WITH INSULATION OR FOAM. DO NOT OVERFILL.

N- CAULK FRAME PERIMETER AT EXTERIOR AND INTERIOR.

O- MAINTENANCE - WASH GLASS AND FRAME WITH NON-ABRASIVE CLEANER. AND OCCASIONAL SILICONE SPRAY ON WEATHERSTRIP WILL MAINTAIN EASE OF OPERATION.



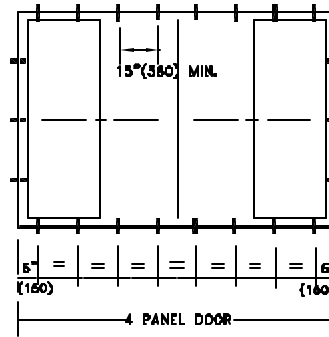
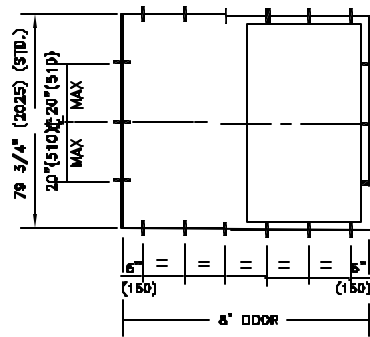
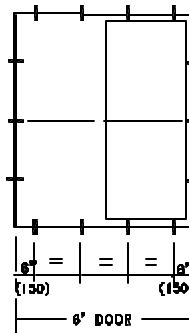
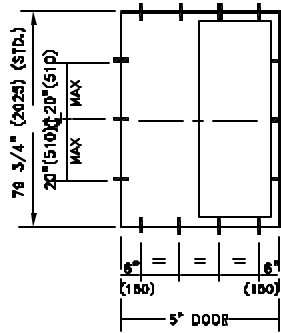
**SASH HEIGHT ADJUSTMENT
(REMOVE COVER PLUG AND USE SCREW DRIVER)**


ITEM.	QTY.	DWG.NO./CAT.NO.	DESCRIPTION	MATERIAL		
 30 Constellation Court Toronto, Ontario M9W 1K1		SHEET 1 / 2			DR. BY.	R.N.
		NO.	REVISION	DATE	DATE	Mar.98
		1.	K.C.	Aug.06	SCALE	
		DOOR INSTALLATION INSTRUCTION			600-000	

DOOR INSTALLATION INSTRUCTION

TYPICAL ANCHOR SPACING FOR STANDARD SIZE DOORS.

LOCATION OF ANCHORAGE FOR NONSTANDARD SIZES OR SPECIAL CONDITIONS
TO BE ESTABLISHED BY FACTORY.



ITEM.	QTY.	DWG.NO./CAT.NO.	DESCRIPTION	MATERIAL		
 30 Constellation Court Toronto, Ontario M9W 1K1	SHEET 2 / 2		DOOR INSTALLATION INSTRUCTION	DR. BY.	R.N.	
	NO.	REVISION		DATE	DATE	Mar.98
	1.	K.C.		Aug.06	SCALE	
					600-000	



**THERMAL PERFORMANCE VALUES
600 SERIES > SLIDING PATIO DOOR(see notes at end)**

SLIDING PATIO DOOR	U Value	SHGC	Vt
Dual Pane - Low-E / Hard Coat	0.32	0.54	0.57
Dual Pane - Low-E / Soft Coat	0.29	0.31	0.54
Dual Pane - Low-E 366	0.28	0.21	0.49
Triple Pane - Low-E / Hard Coat x 2	0.21	0.42	0.47
Triple Pane - Low-E / Soft Coat x 2	0.19	0.27	0.43
Super Quad	0.17	0.23	0.30

Note: All values have been verified by the NFRC and Energy Star Canada. The reader is cautioned that test results should be used for comparison purposes only. Results are size and installation dependent.

For recommendations as to what glazing configurations are best suited for your application, please feel free to contact us.

For a full listing of thermal performance values, visit www.NFRC.org. All information can be found in the "Certified Products Directory". Please feel free to contact us if any assistance is required.

INLINE also complies with all North American Energy Star zoning requirements.



600 SERIES SLIDING GLASS DOOR

TEST REPORT SUMMARY

In compliance to AAMA/
101/I.S.2/ CSA A440

TEST SIZE	1816mm x 2025mm
	71 1/2" x 79 3/4"

STANDARD	REQUIREMENTS		RESULTS	GRADE	
	TEST METHOD	TEST PRESSURE		AAMA	CSA
Air Tightness	ASTM E 283	+@ 75 Pascals +@ 1.57 psf	0.30 L/s.m ² +/-0.06 CFM/ft ²	A3	A3
Water Tightness	ASTM E 547	@ 525 Pascals @ 11 psf	No Leakage	DP 70	B5
Wind Load Resistance	ASTM E 330	+@ 3375 Pa @ 70 psf	No Deformation	DP 45	C3
Series 600 sliding glass door is rated SD-R-45, Design Pressure 45 @ test pressure 266 kph (166 mph).					

Energy Ratings

The Thermal Performance Values shown below, are based on products glazed with 7/8" (22mm) insulating glass units comprising one lite of Low-E glass, an argon filled cavity and double sealed aluminum spacer bar.

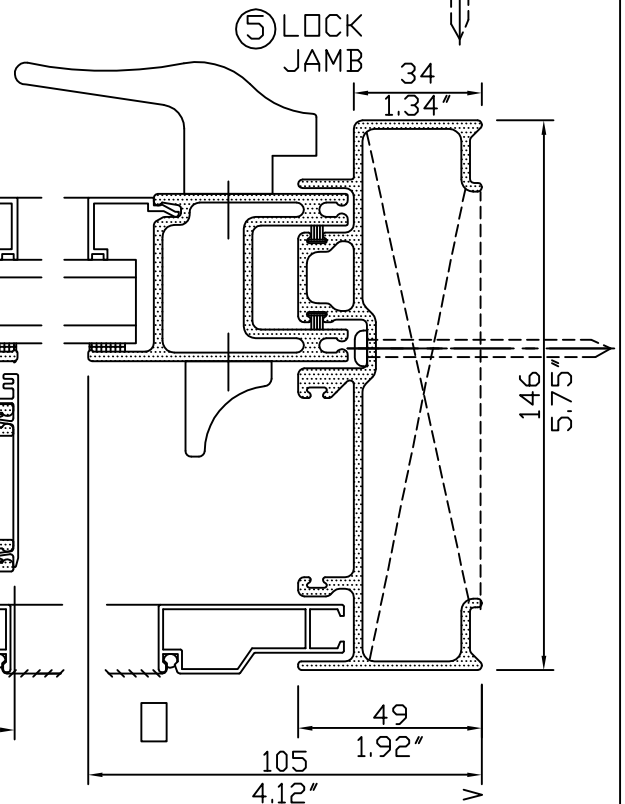
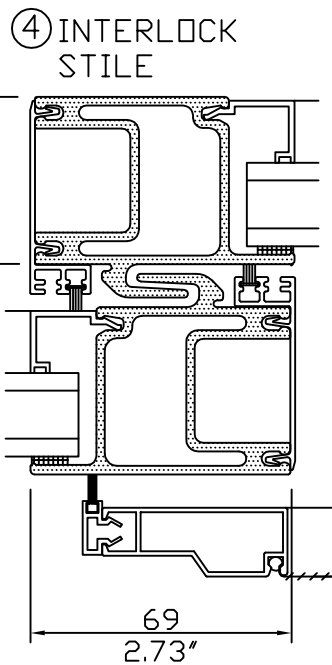
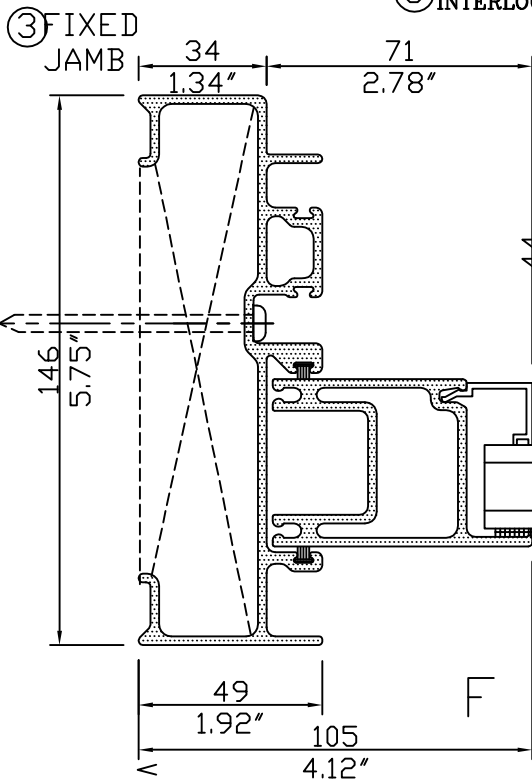
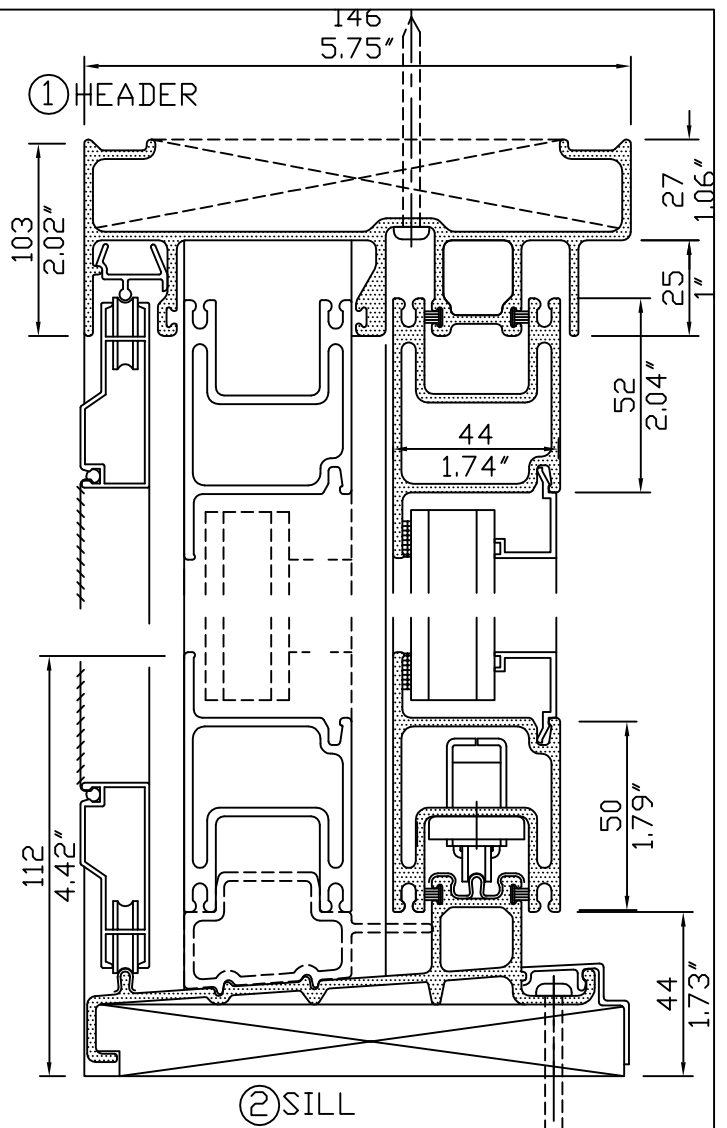
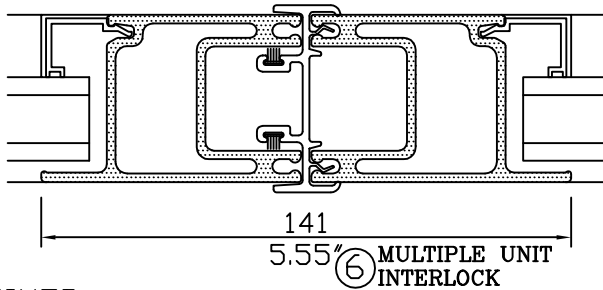
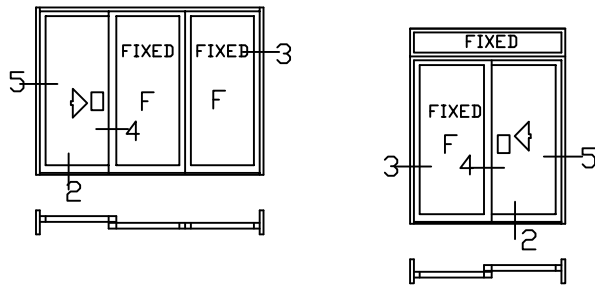
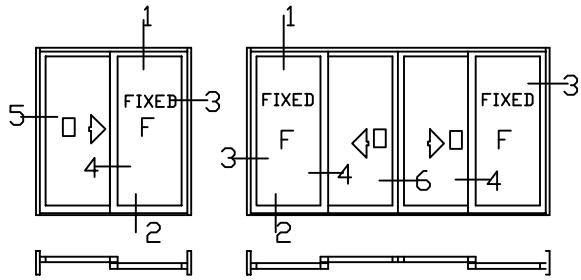
Higher performance may be achieved by using various glass coatings, inert gasses, and/or warm edge spacers.

Performance	CSA 440.2	NFRC 100 Residential 72" x 82"	NFRC 100 Non-Residential 72" x 96"
U-Value Frame	2.29 W/m ² /c	0.41 Btu/hft ² /F	0.41 Btu/hft ² /F
U-Value Window	1.99 W/m ² /c	0.35 Btu/hft ² /F	0.35 Btu/hft ² /F
SHGC - No Grill	0.51	0.51	0.49
SHGC - With Grill	0.45	0.45	0.44
VLT - No Grill	0.56	0.56	0.56
VLT - With Grill	0.50	0.50	0.50

Note: The reader is cautioned that test results should be used for comparison purposes only. Results are size and installation dependent. In-Service performance can be significantly different from those shown. Product tested indicates design potential.

FIBERGLASS PATIO DOORS

SERIES 600



SLIDING GLASS DOORS

PRODUCT

Shall be 600 Series Fiberglass Sliding Door as manufactured by Inline Fiberglass Limited. Frames are 145mm (5-3/4") deep and comprise an interior operating panel and an exterior fixed panel. Sliding Glass Doors shall be in compliance with AAMA 101/1.S.2 rating: SD-R45 Design Pressure 45 and CSA A440 A3, B5, C3.

MATERIALS

All frame and sash profiles are made from pultruded fiberglass having a nominal wall thickness of 2.3mm (0.090"). Non-structural accessory members are permitted to be vinyl or aluminum and identified as such.

CONSTRUCTION

Frame and panel corners are connected with metal or molded reinforced polymer components and mechanically secured. Joints are factory sealed and neatly fitted together. The perimeter of open-back frames shall be filled with insulation.

HARDWARE

The sliding panel and fly screen are equipped with two adjustable, double, tandem rollers fitted with [nylon wheels] [stainless steel] for silent operation. Locking handle is an attractive, die-cast zinc assembly with double hook. Frame sill member shall include stainless steel track liners. Door travel limit bumpers shall be provided at head and sill of jambs, for fully open and closed positions as well as anti-lift blocking to provide resistance to forced entry. A sill mounted foot lock and/or a cylinder lock, is available as an option.

FINISH

All exposed surfaces are coated with durable acrylic urethane top coat with a medium gloss of 17-35. In compliance with AAMA-613. Available in five standard colours. Unlimited custom colours, including split finish.

WEATHER-STRIPPING

Double line of silicone coated woven pile with integral fin at interior to provide air and vapor seal.

GLASS

Operating and Fixed Panels are glazed with standard [22mm (7/8")], [36.6mm (1 7/16")] for triple glazing, insulating glass units comprising safety glass components. Glass thickness shall be in accordance with applicable Building Codes. Inline recommends the use of double-sealed insulating glass units certified by IGMAC or SIGMA. The full range of glazing options available include: colonial grilles, low conductivity spacers, inert gas fills, and glazings to reduce heat loss, solar heat gain, and visible light transmission.

GLAZING METHOD

The fixed and operating sashes utilizes laid-in glazing using polyethylene closed cell tape on the exterior and a PVC glass stop locked-in from the interior provides a secure and positive seal for the glass.

INSECT SCREENS

A heavy-duty extruded frame with [Fiberglass] [Aluminum] mesh provides Standard Duty performance.

INSTALLATION

Shall be performed by experienced installers in accordance with manufacturer's instructions and CSA-A440.4. Window shall be plumb and square after installation is complete and sealed to both interior and exterior walls with a high sealant around the perimeter of the frame. If perimeter cavity is to be foamed, additional anchorage may be required to prevent bowing. It shall be the responsibility of the installers to make all necessary final adjustments to ensure normal and smooth operation.

MAINTENANCE

To maintain performance and ease of operation, clean glass, frames and fly screen, vacuum weather stripping and sill, lubricate hardware and weather-stripping with only silicone spray, a minimum of every six months. Adjust roller wheels to center clearance and ease operation.

- Due to constant product improvements, Inline reserves the right to change information herein without notice.

**600 SERIES
CONVENTIONAL SLIDING PATIO DOOR
Standard Sizes**

Rough Opening	TYPE	STYLE* (from Exterior)	Overall FRAME SIZE	
			Millimetres	Inches
60" x 80'	2-Panel	FO or OF	1511 x 2026	59-1/2 x 79-3/4
72" x 80"	2-Panel	FO or OF	1816 x 2026	71-1/2 x 79-3/4
96" x 80"	2-Panel	FO or OF	2426 x 2026	95-1/2 x 79-3/4
90" x 80"	3-Panel	FFO or OFF	2267 x 2026	89-3/8 x 79-3/4
108" x 80"	3-Panel	FFO or OFF	2724 x 2026	107-3/8 x 79-3/4
144" x 80"	3-Panel	FFO or OFF	3639 x 2026	143-3/8 x 79-3/4
117" x 80"	4-Panel	FOOF	2959 x 2026	116-1/2 x 79-3/4
141" x 80"	4-Panel	FOOF	3569 x 2026	140-1/2 x 79-3/4
189" x 80"	4-Panel	FOOF	4788 x 2026	188-1/2 x 79-3/4

***F = Fixed Panel**

O = Sliding Panel

Copyright Inline Fiberglass Ltd. of Toronto, Canada 2000